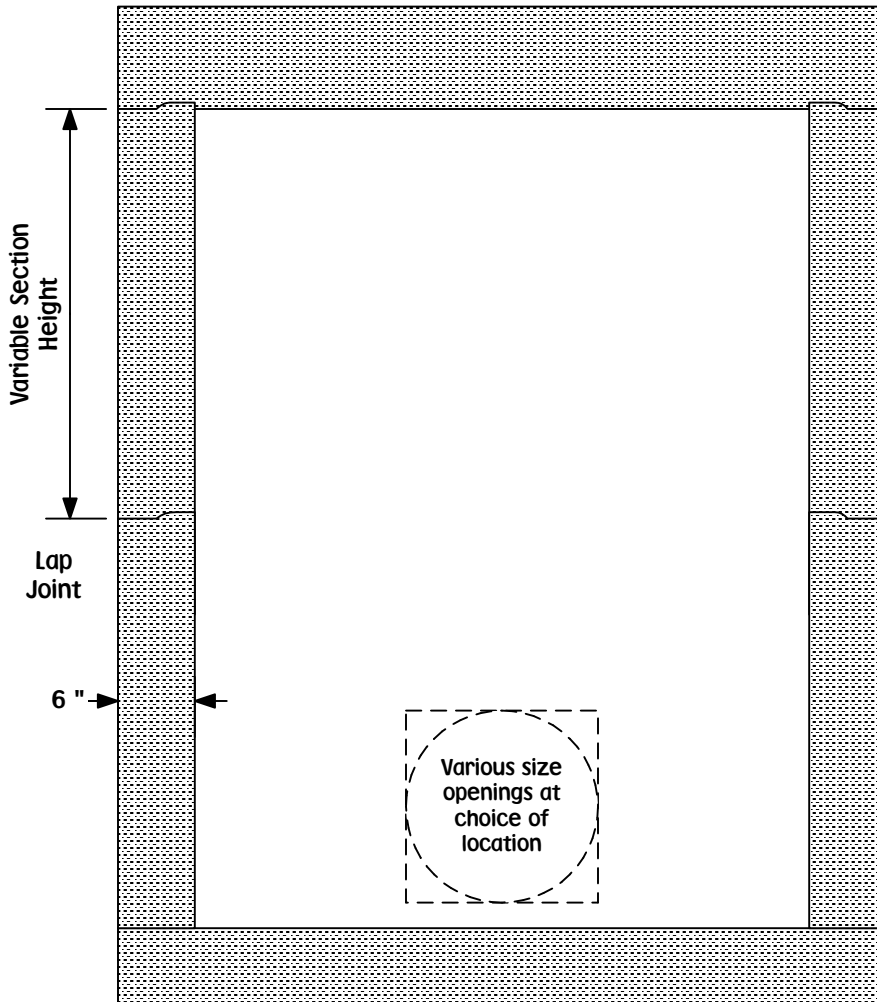




KOHNEN CONCRETE PRODUCTS, INC.

503 GREEN STREET
GERMANTOWN, IL 62245
618-523-4266
Belleville 618-277-2120
Fax 618-523-4751

CONCRETE
CATCH BASIN / STORM WATER INLET / LIFT STATION
3' X 3' OR 4' X 4'
LARGER CUSTOM BOX CONSTRUCTION AVAILABLE ON REQUEST



Options Available

Cover Slab - Lap Joint or Flat
Frame & Covers (Grated or Solid),
Aluminum Hatch
Throat Openings for Curb or
Area Inlet Configuration

Joint Sealant

Custom Openings
and Gaskets Available

Variable Floor Thickness

3' X 3' Sections Available - 6' Tall or Less - 1,050 Lbs. Per Foot

4' X 4' Sections Available - 5' Tall or Less - 1,315 Lbs. Per Foot