

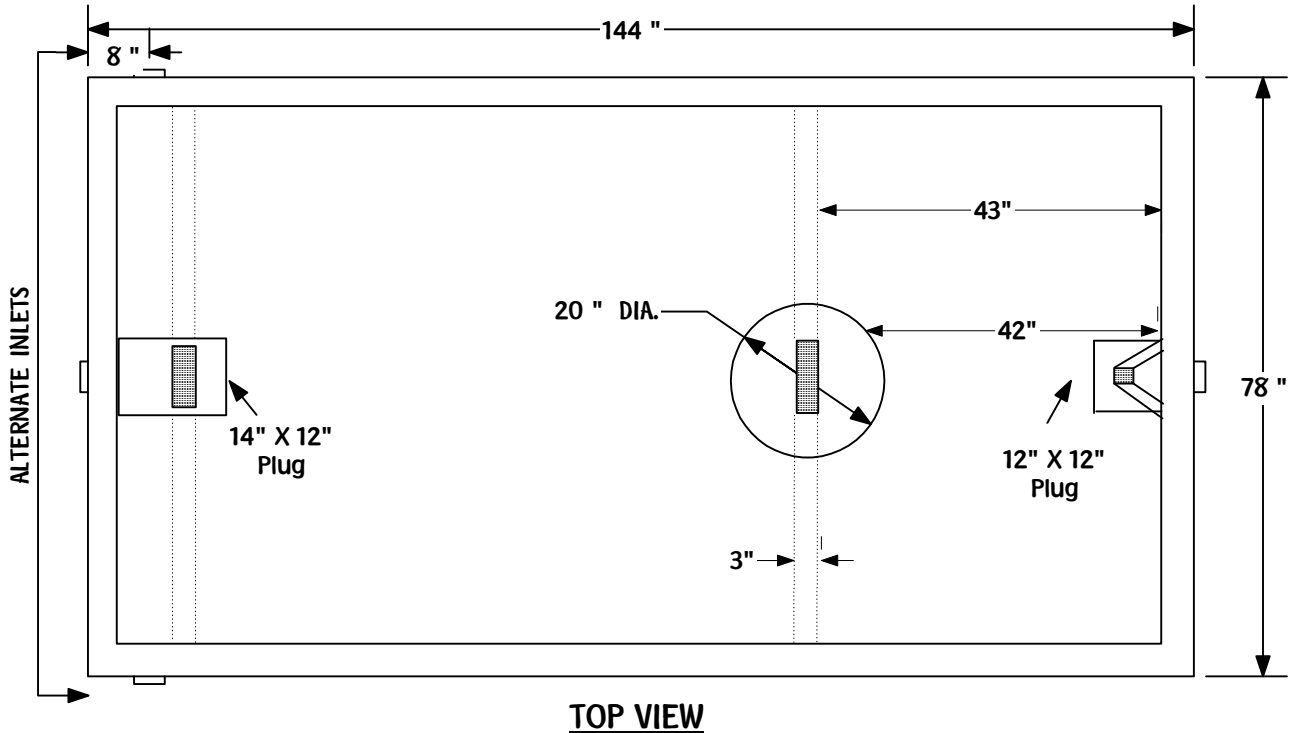
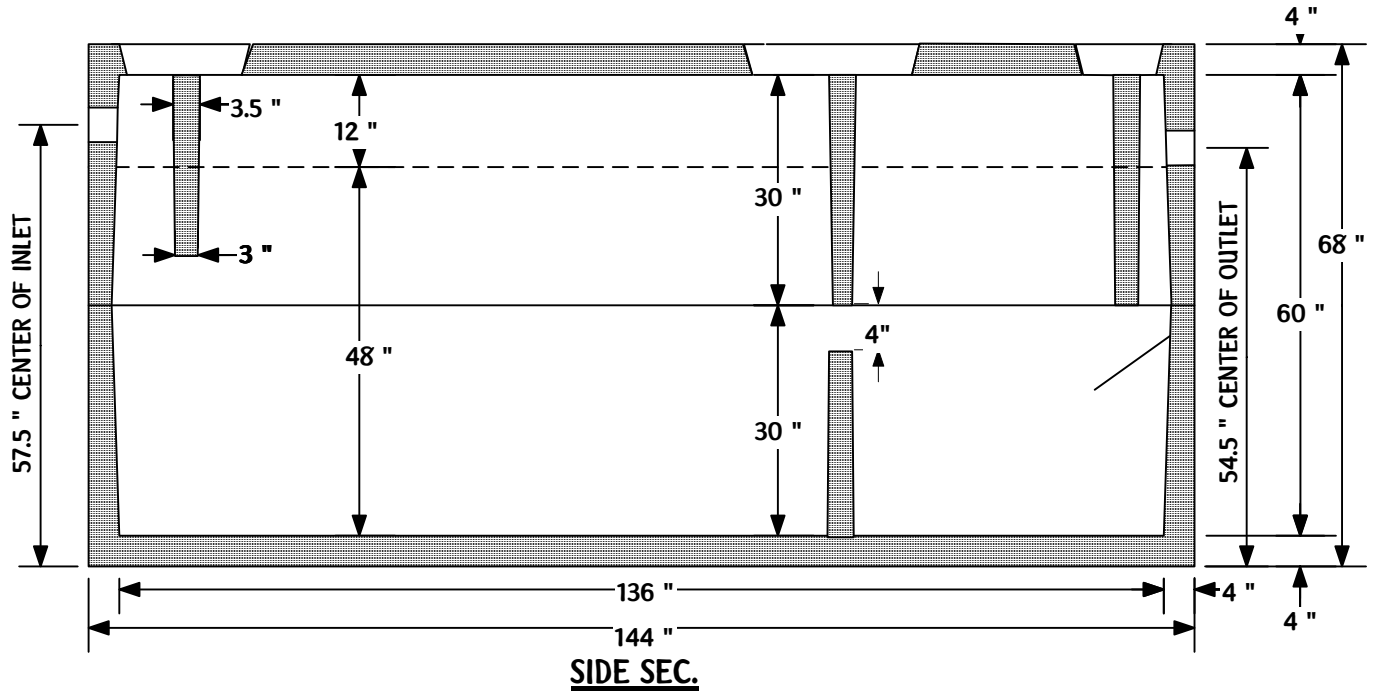


# KOHNEN CONCRETE PRODUCTS, INC.

503 GREEN STREET  
 GERMANTOWN, IL 62245  
 618-523-4266  
 Belleville 618-277-2120  
 Fax 618-523-4751

## 2000 GALLON REINFORCED CONCRETE 2 COMPARTMENT SEPTIC TANK

EXCAVATION SIZE: 14' L X 8' W



WEIGHT 15,600 LBS.

THIS STRUCTURE IS NOT DESIGNED FOR VEHICULAR TRAFFIC OR MORE THAN 4' OF COVER OVER THE TOP OF THE TANK.