

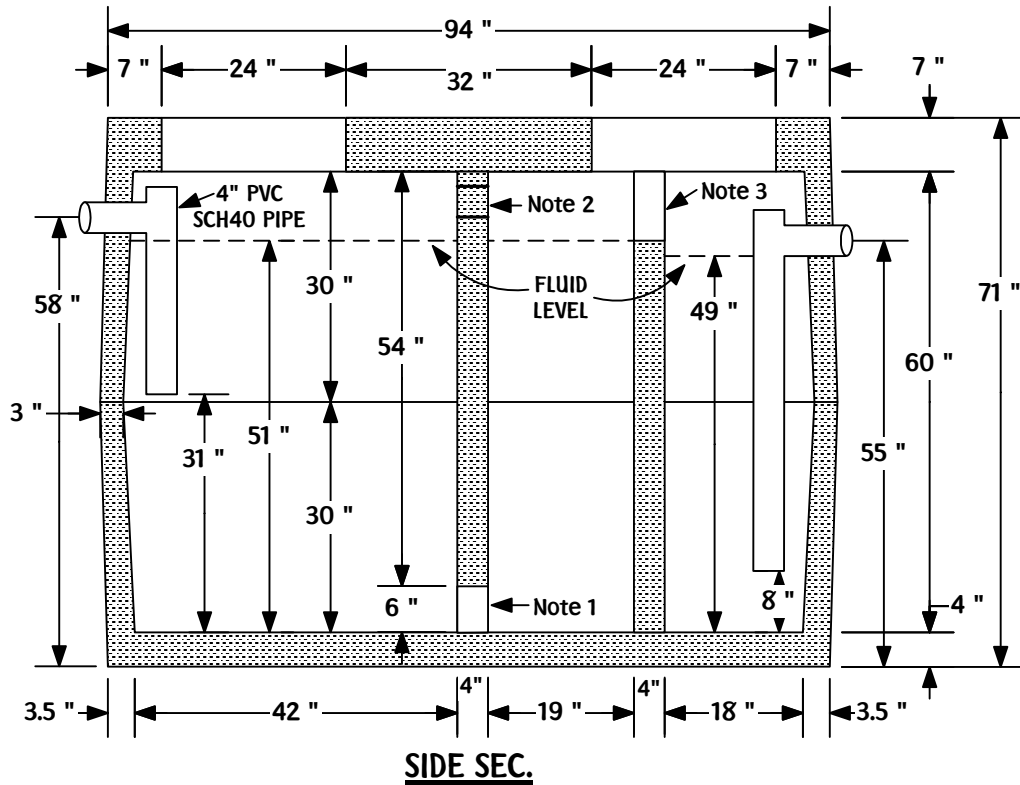


# KOHNEN CONCRETE PRODUCTS, INC.

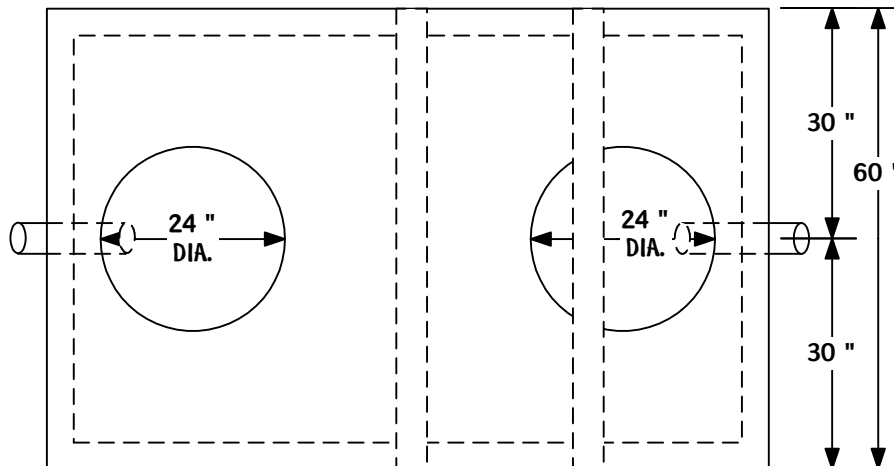
503 GREEN STREET  
 GERMANTOWN, IL 62245  
 618-523-4266  
 Belleville 618-277-2120  
 Fax 618-523-4751

## 1000 GALLON REINFORCED CONCRETE GREASE INTERCEPTOR

EXCAVATION SIZE: 9' L X 6' W



**OPTIONS**  
 GRADE RISERS (DONUTS)  
 FRAME & COVERS  
 LARGER INLET & OUTLET  
 SEALANT



### TOP VIEW

WEIGHT: 10, 950 LBS

NOTE: THIS TANK IS NOT DESIGNED FOR VEHICULAR TRAFFIC. IF USED IN TRAFFIC AREAS A REINFORCED CONCRETE SLAB MUST SPAN THE TANK AND OVERDIG TO PROTECT THE TANK.